



YOUR VISION
OUR MISSION

BROS
MASTER MIND
EVENTS

OUR VISION



To extend our clients' brand messages beyond traditional marketing methods by creating memorable experiences that evoke emotions, shape opinions and produce the finest events our industry has seen.

OUR MISSION



Our mission serves as the framework for our Roadmap and guides every aspect of our business by describing what we need to accomplish in order to continue achieving sustainable, quality growth.

“ TECHNOLOGY

Elevating Experiences
through Technology

OUR
SERVICES

Elevate your events with our immersive technology solutions, from augmented reality and holograms to mechanical marvels and interactive installations. We blend virtual and physical worlds to create unforgettable experiences that captivate your audience.



ROBOTIC ARMS



HOLOBOX



LED GLOBE



SLIDING SCREEN



KINETIC HYRAULIC 3D MODELS



INTERACTIVE TRANSPARENT OLED SCREEN



INTERACTIVE KINETIC WALL



INTERACTIVE 3D MODEL TABLE



FOG PROJECTION SCREEN



3D ANAMORPHIC CONTENT



CURVED LED SCREENS



ROTATING LED TRIANGLE



DYNAMIC LED WALL



IMMERSIVE ROOM



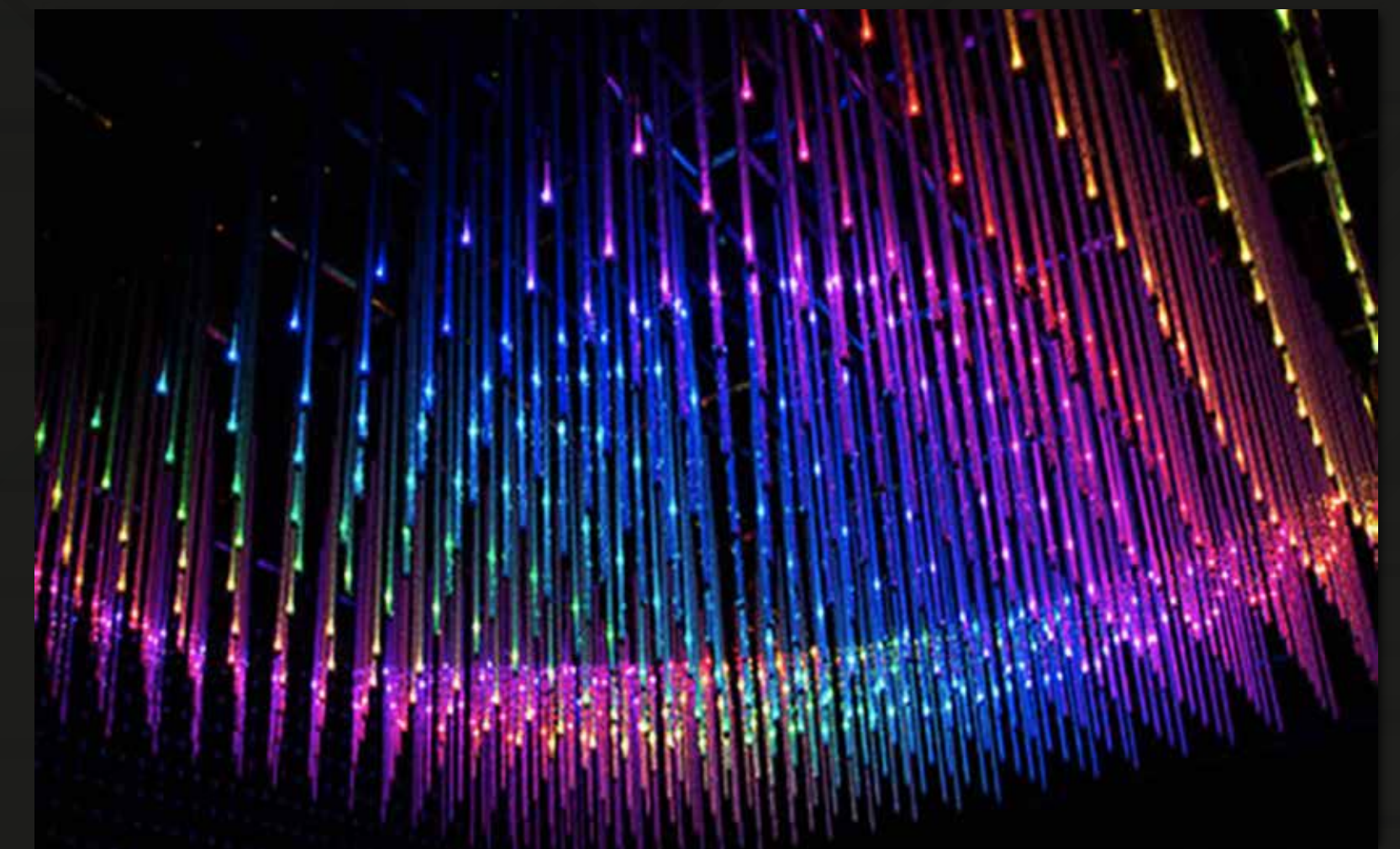
MOTION SENSORS



LEAP MOTION SENSOR



TOUCH SCREENS



PROGRAMMABLE LED LIGHTS



HYPERSN HOLOGRAPHIC FANS



KINETIC CEILING



HOLOCUBE



AIR TOUCH



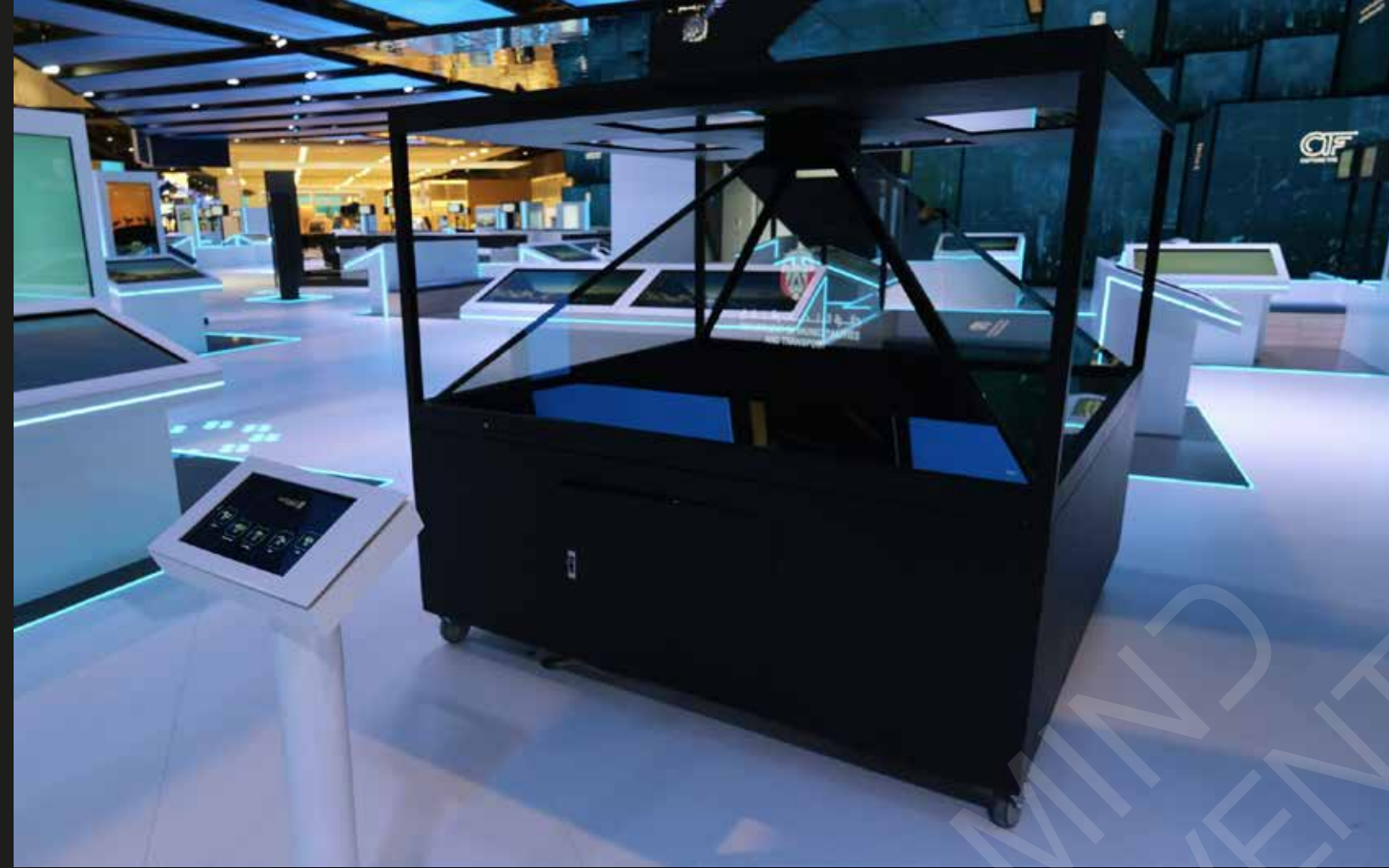
INTERACTIVE ROUND SCREEN



MESH SCREENS



AUTOMATED ROBOCAFE



3D HOLOPYRAMID



PROJECTION MAPPING



ROBOTIC GLOBE



TANGIBLE TABLE



ROBOTIC GLOBE

GAMIFICATION



Gamification

Gamification is revolutionizing the events industry, and Bros Mastermind is at the forefront of this trend. Incorporating game-like elements into events boosts engagement and creates memorable experiences.



Interactive Motion Sensor Game

Our Interactive Motion Sensor Game integrates advanced motion-sensing technology to deliver a sophisticated and engaging experience. By detecting and responding to users, it creates a dynamic and immersive environment that enhances user interaction and activity.



Gamification Activation with a Prize

Enhance engagement and drive participation with our Gamification Activation, featuring an enticing prize incentive. This solution integrates interactive game elements into your event or marketing campaign, encouraging active involvement through challenging and rewarding experiences.



SOUNDS COLLECTION

SOUNDS COLLECTION (Communicate, Hear and Collect) : A unique auditory experience using PVC pipes where children identified and learned about different sounds. They could listen through tube holes to hear sounds from the other side, engaging their listening skills.



ENTRANCE & ANIMAL VISION

- **ENTRANCE** : Get Your Ticket - Combined an iPad with a real-time barcode printed bracelet for entry.
- **ANIMAL VISION (Go Through, Observe, Explore)** : An interactive 3D display of CAT and DOG HEADS, enabling children to see the world through the eyes of different animals.



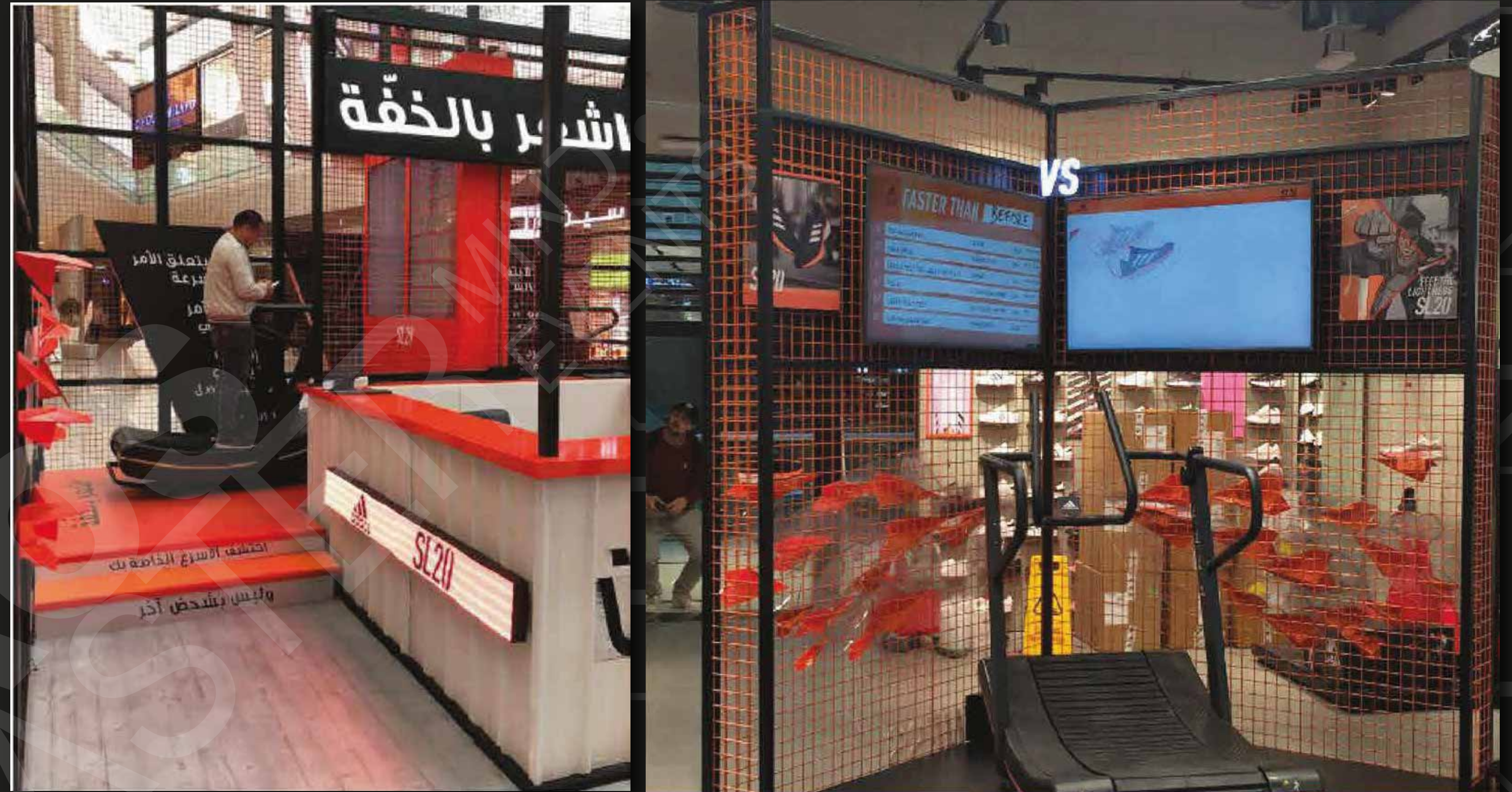
LET'S DOODLE

LET'S DOODLE : A creative space with a printed canvas floor where children freely doodled and expressed themselves artistically. They also had a coloring canvas to color objects, encouraging creativity.



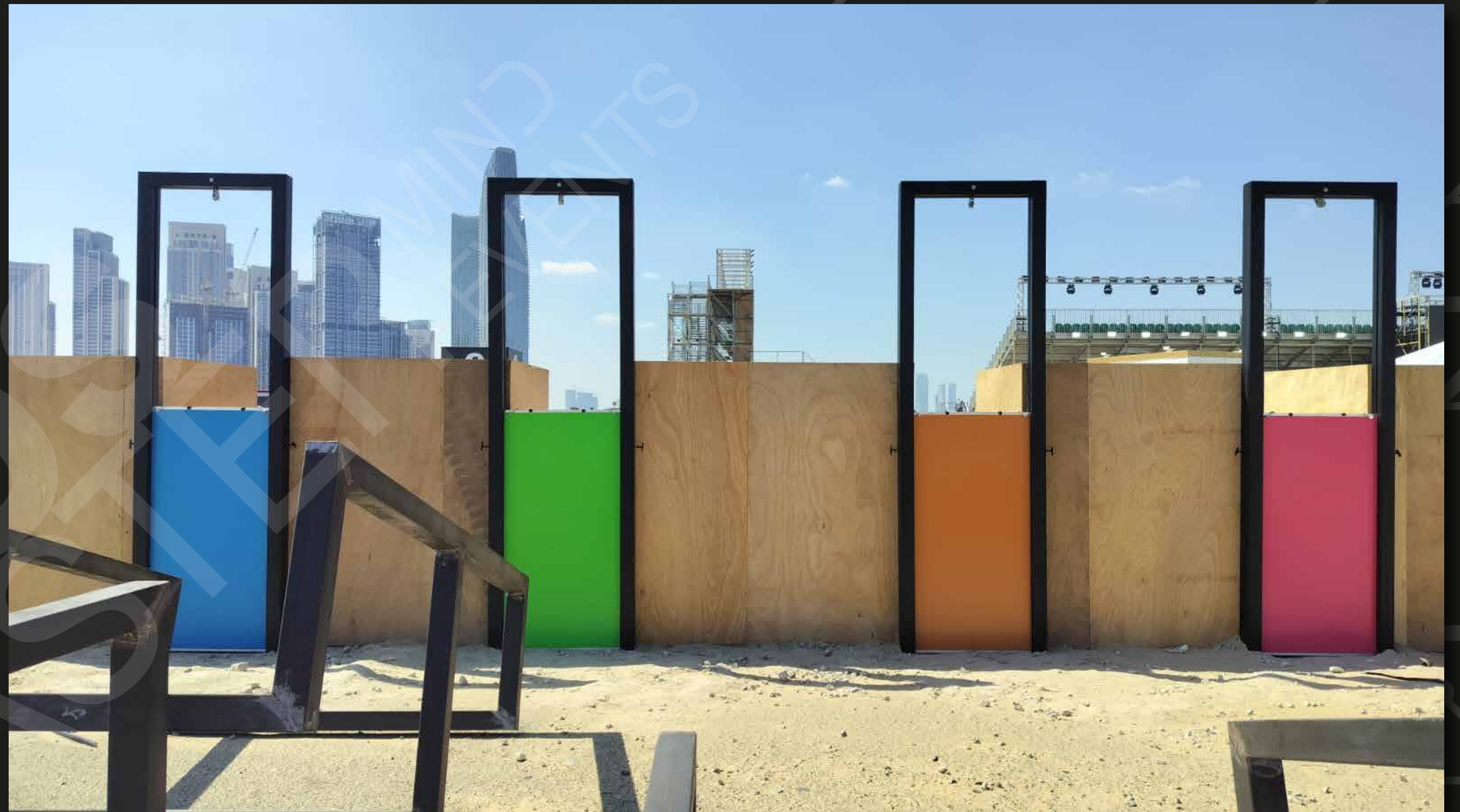
Gamification Activation

Gamification Activation uses game elements like points, badges, and leaderboards to engage individuals and motivate them to achieve specific goals..



Pullups

The Pullup Machine is a state-of-the-art fitness apparatus designed to assist users in performing pullups, a fundamental exercise for building upper body strength. This machine is engineered to provide adjustable support, making it suitable for users of all fitness levels, from beginners to advanced athletes.



GEARS

Gears are mechanical components consisting of toothed wheels that interlock to transmit motion and force between machine parts. They are fundamental in the design of various mechanical systems and machinery.

- Precision Engineering: Manufactured to exact specifications to ensure smooth and efficient power transmission.
- Durable Materials: Made from high-quality metals or composites to withstand high loads and wear.



Cycle Challenge

An interactive exhibition stand featuring digital screens or monitors displaying the virtual cycling challenge interface. Set up stationary bikes for attendees to use during the event.

- Virtual Cycling Experience
- Real-time Leaderboards
- Prizes and Incentives



Agility Challenge

An interactive areas for agility challenges.
with sensor activated basketballs.

- Agility Stations
- Real-time Leaderboards
- Prizes and Incentives



Wheel Treadmill Challenge

An engaging dedicated area for the Wheel Treadmill Challenge. Provide adjustable resistance levels to accommodate participants of different fitness levels

- Wheel Treadmill Station
- Real-time Leaderboards
- Prizes and Incentives



Speed Stomping Challenge

An innovative sensor activated speed Stomping challenge

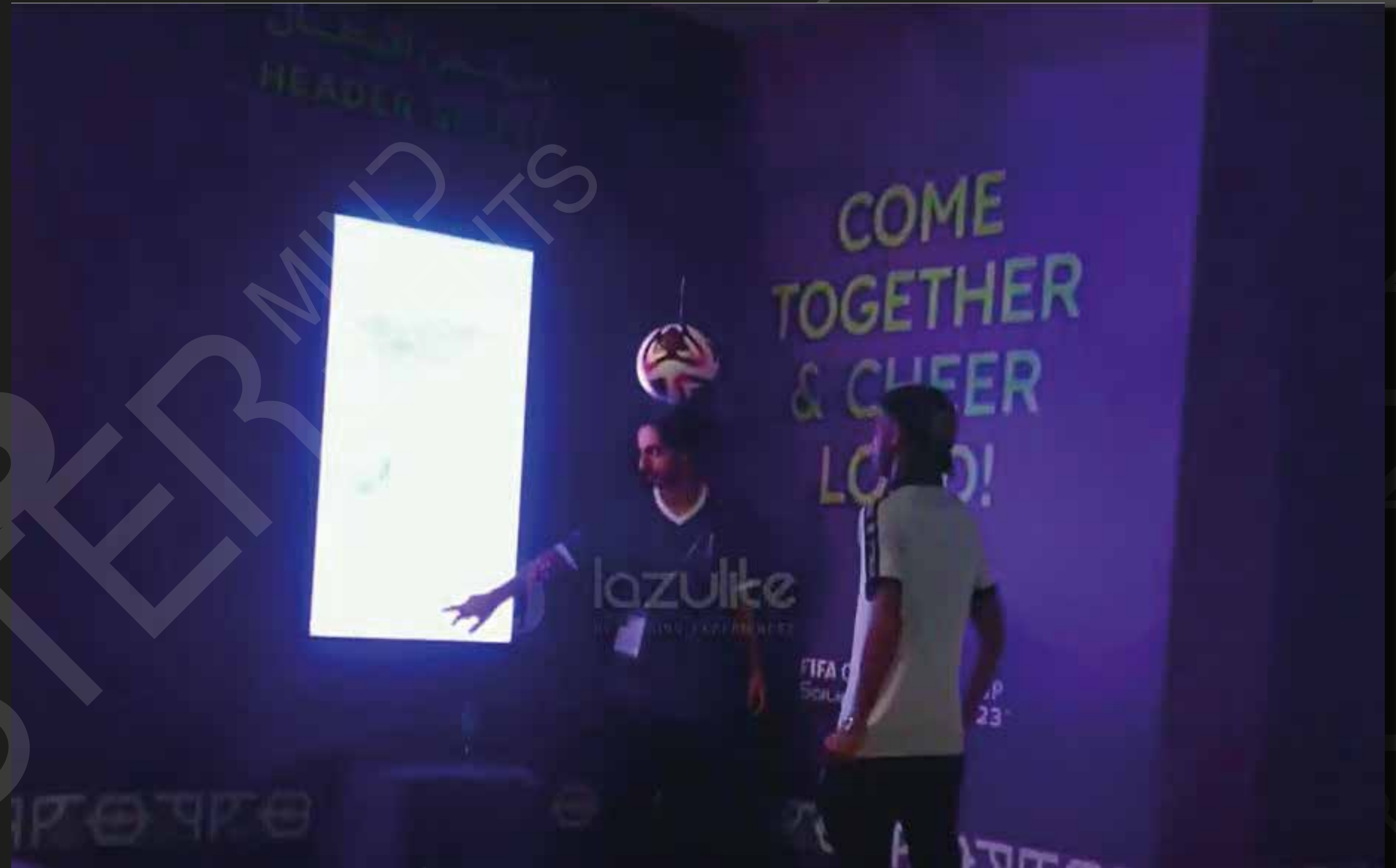
- Stomping mechanism
- Real-time Leaderboards
- Prizes and Incentives



Header Selfie Photo Booth

The photo booth area with a backdrop featuring customizable header templates or themed backgrounds. Ensure good lighting and a clear space for participants to pose.

- Header Selfie Station
- Photo booth



Target Shot

The Digital Square Target Shot as an interactive and challenging game that tests participants' accuracy and precision.

- Wheel Treadmill Station
- Real-time Leaderboards
- Prizes and Incentives



Accuracy Test

The Hexagon Sensor-Activated Accuracy Activation is an exciting and interactive game that challenges participants' accuracy and precision.

- Hexagon Sensor-Activated



Innovation Soccer

The Digital Innovative Soccer activation as a modern and interactive twist on traditional soccer, combining technology and innovation to enhance the playing experience.



Virtual Penalty

The Virtual Penalty Activation as an immersive and exciting experience that allows participants to test their skills in penalty shootouts against virtual goalkeepers.



VR Goalie

The VR Goalie activation as an immersive and thrilling experience that allows participants to become a virtual goalkeeper and defend against penalty shots in a virtual reality environment.



Speed Drill

The Speed Drill Trail activation as an exhilarating challenge designed to test participants' speed, agility, and endurance through a series of dynamic drills along a designated trail.



Quick Feet – Foot Batak Challenge

The Quick Feet Foot Batak Challenge as a high-intensity agility and coordination test designed to improve participants' footwork and reaction times.



QUICK FEET - FOOT BATAK CHALLENGE

VR Golf

The VR Golf Activation as an immersive and exciting experience that allows participants to play virtual golf in realistic and stunning environments. VR headsets, motion controllers, and tracking sensors.



Rover Racer

A innovative and interactive experience that combines remote-controlled rovers with digital sensors to create an exciting racing challenge.



Jump Higher

A innovative and interactive experience that challenges participants to improve their vertical jump height using motion-controlled technology.



Treadmill Race

The Digital Treadmill Race Activation as an exciting and competitive experience that simulates outdoor running in a controlled indoor environment using digital technology.



Wall Climb

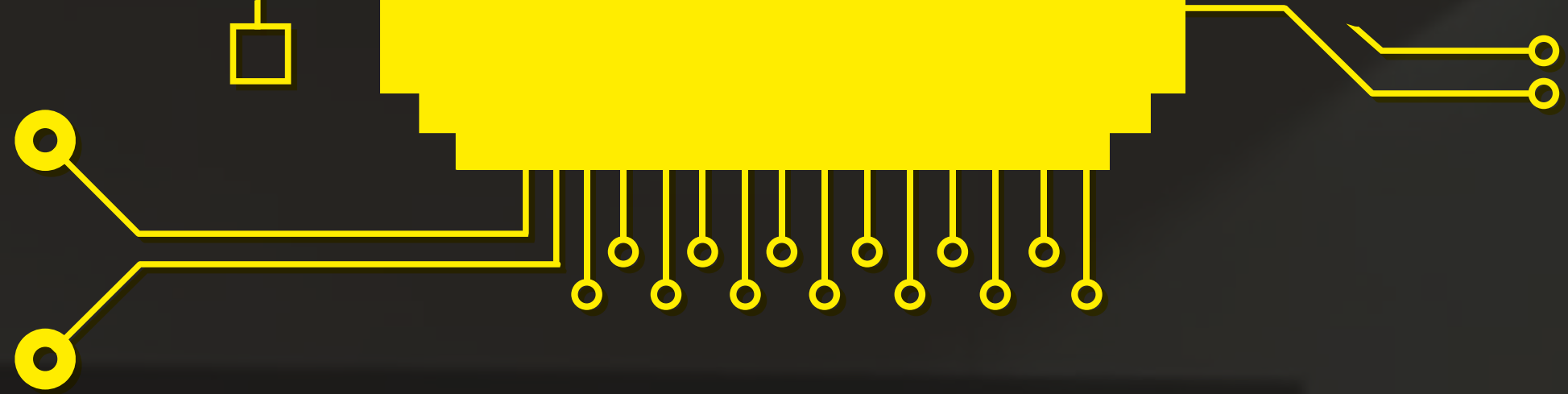
An innovative and challenging experience that combines rock climbing with interactive technology with digital sensors and motion-controlled devices that track participants' movements as they climb.



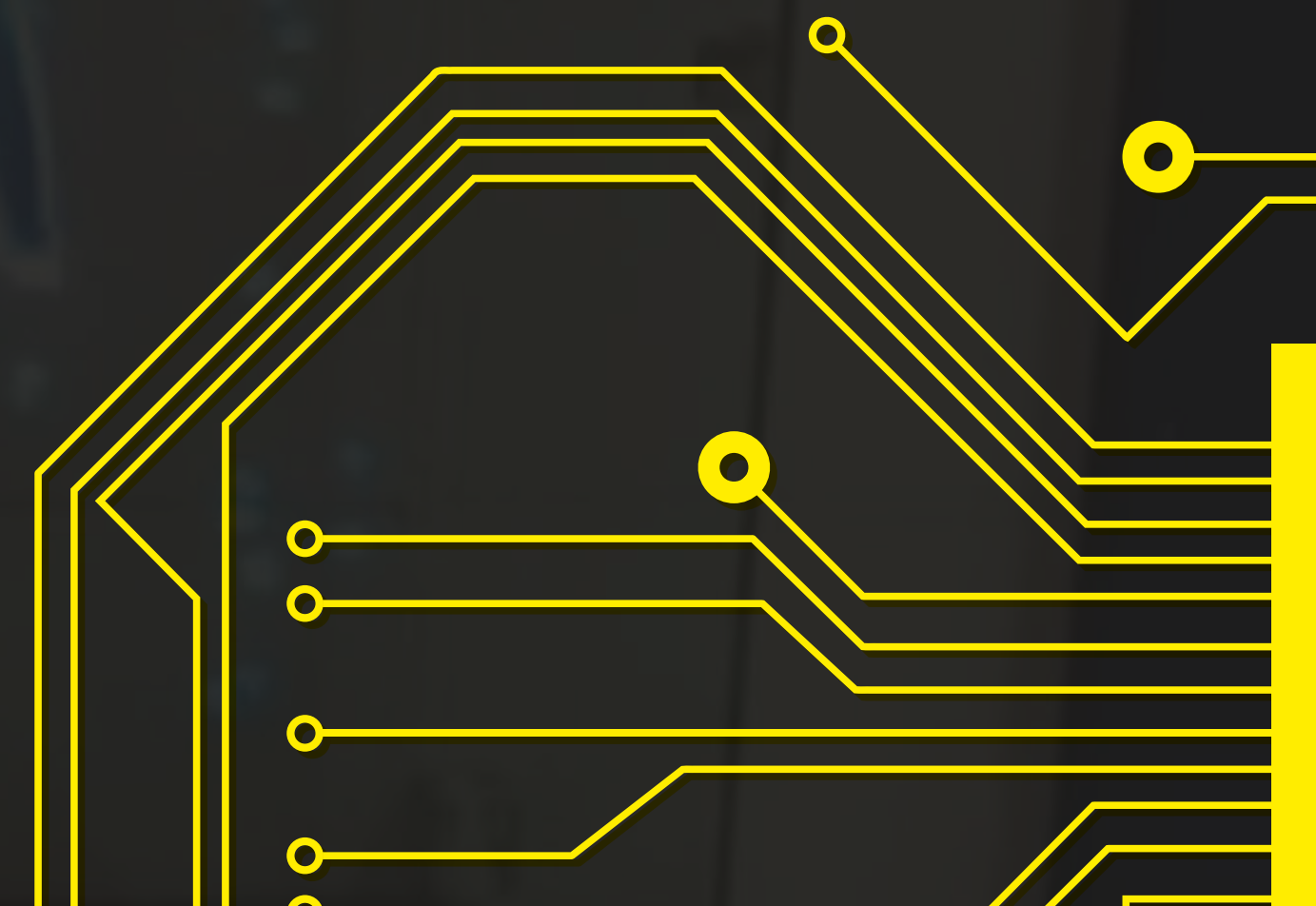
Trampoline Selfie Booth

An innovative and challenging experience that combines rock climbing with interactive technology with digital sensors and motion-controlled devices that track participants' movements as they climb.



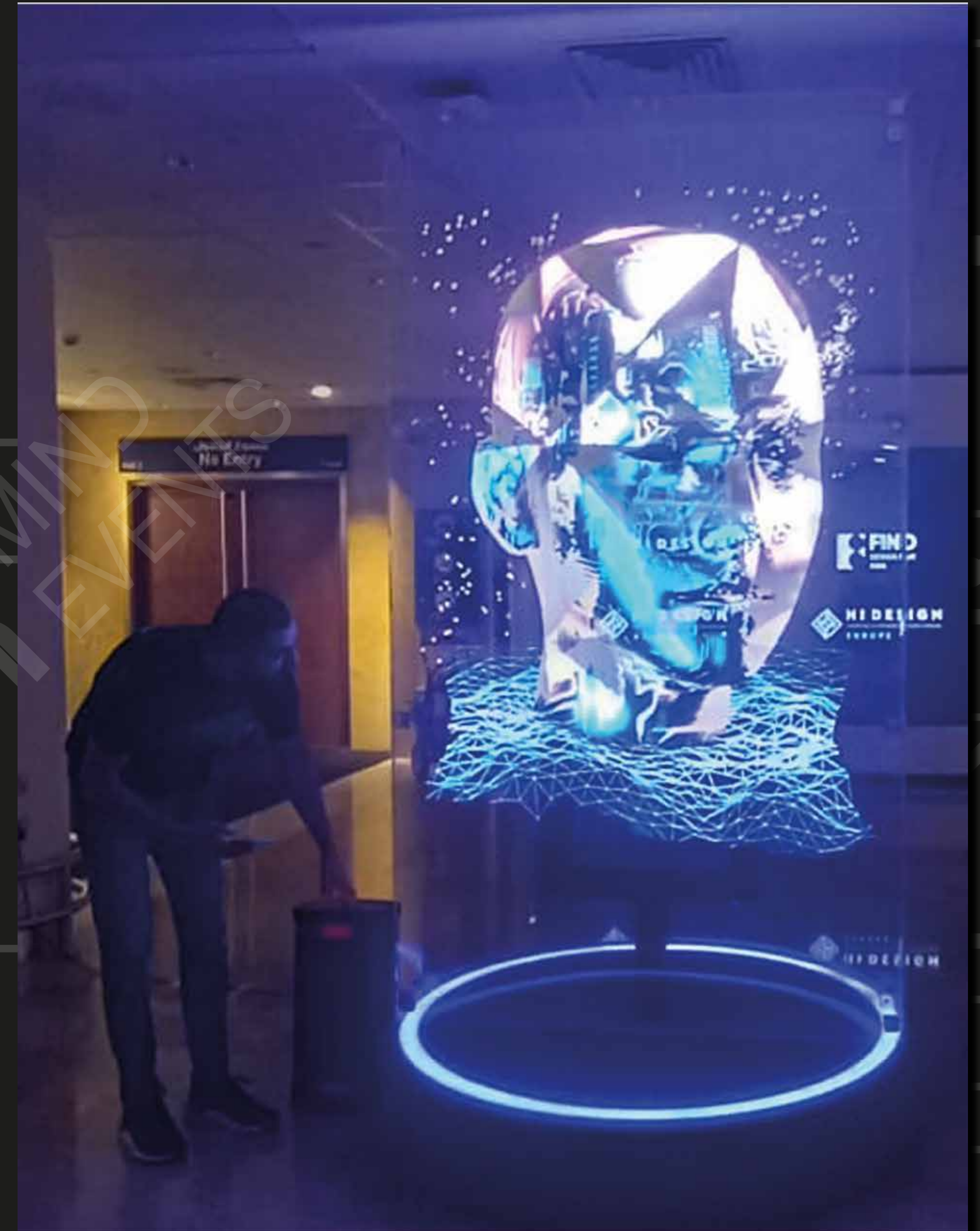


HOLOGRAM TECHNOLOGY



Interactive AI Hologram

Holographic Projection that is powered by artificial intelligence, enabling it to interact with users in real-time. These holograms can recognize and respond to verbal and physical cues.



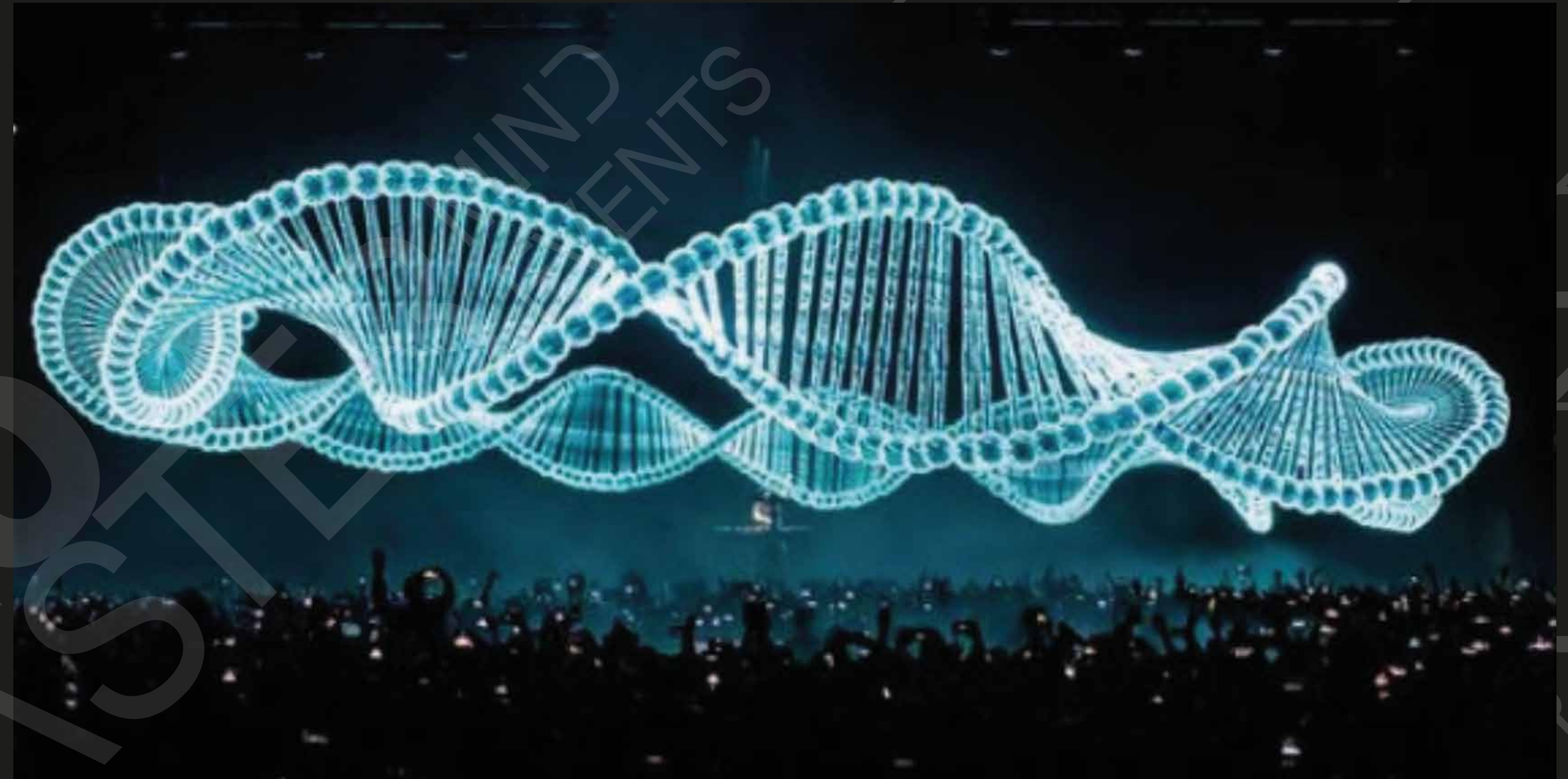
Large scale holograms

At Bros Mastermind, we specialize in creating large-scale holograms that transform events and exhibitions into unforgettable experiences. Our cutting-edge holographic technology brings 3D visuals to life, captivating and engaging audiences.



Large Scale Outdoor Hologram

The Large Scale Outdoor Hologram is a groundbreaking display technology designed to project stunningly realistic 3D holographic images in outdoor environments. Leveraging advanced optics, projection systems, and environmental resilience, this technology creates captivating visual experiences for large audiences.



Hologram Display

Holographic Projection that is powered by artificial intelligence, enabling it to interact with users in real-time. These holograms can recognize and respond to verbal and physical cues.

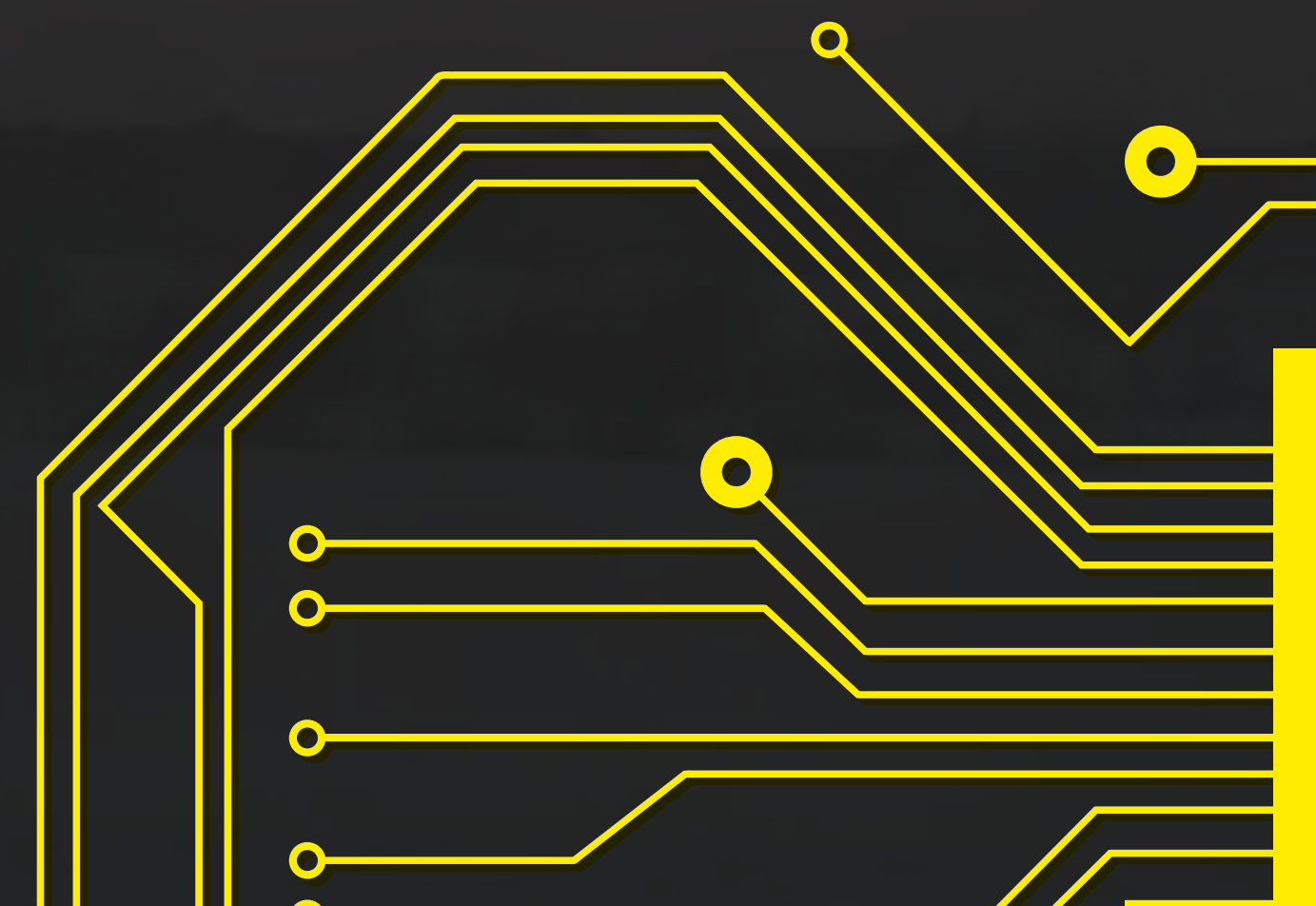
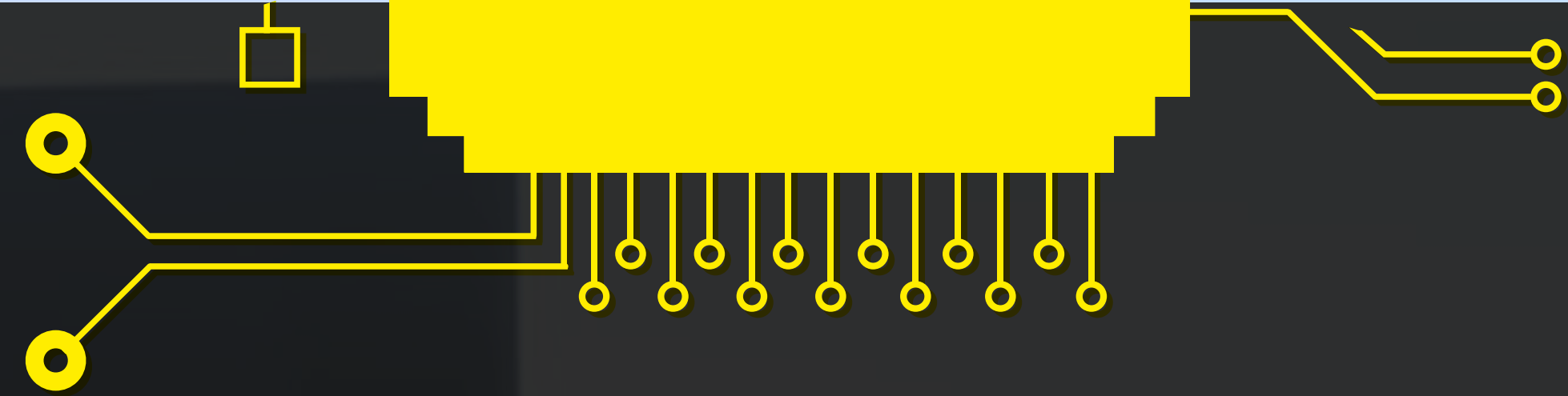


Interactive Hologram Tree

An Interactive Hologram Tree is a cutting-edge display technology that uses holograms to create a 3D tree-like structure. This technology blends visual aesthetics with interactive functionality, making it ideal for educational exhibits, advertising, art installations, and other immersive experiences.



IMMERSIVE ROOM



Immersive Rooms with AI Hologram

Immersive Rooms with AI Hologram is an advanced interactive environment that combines immersive room design with artificial intelligence-driven holographic projections. This technology creates a fully engaging and dynamic experience by integrating 3D holograms and intelligent systems into a controlled space, allowing users to interact with and explore virtual environments in real-time.



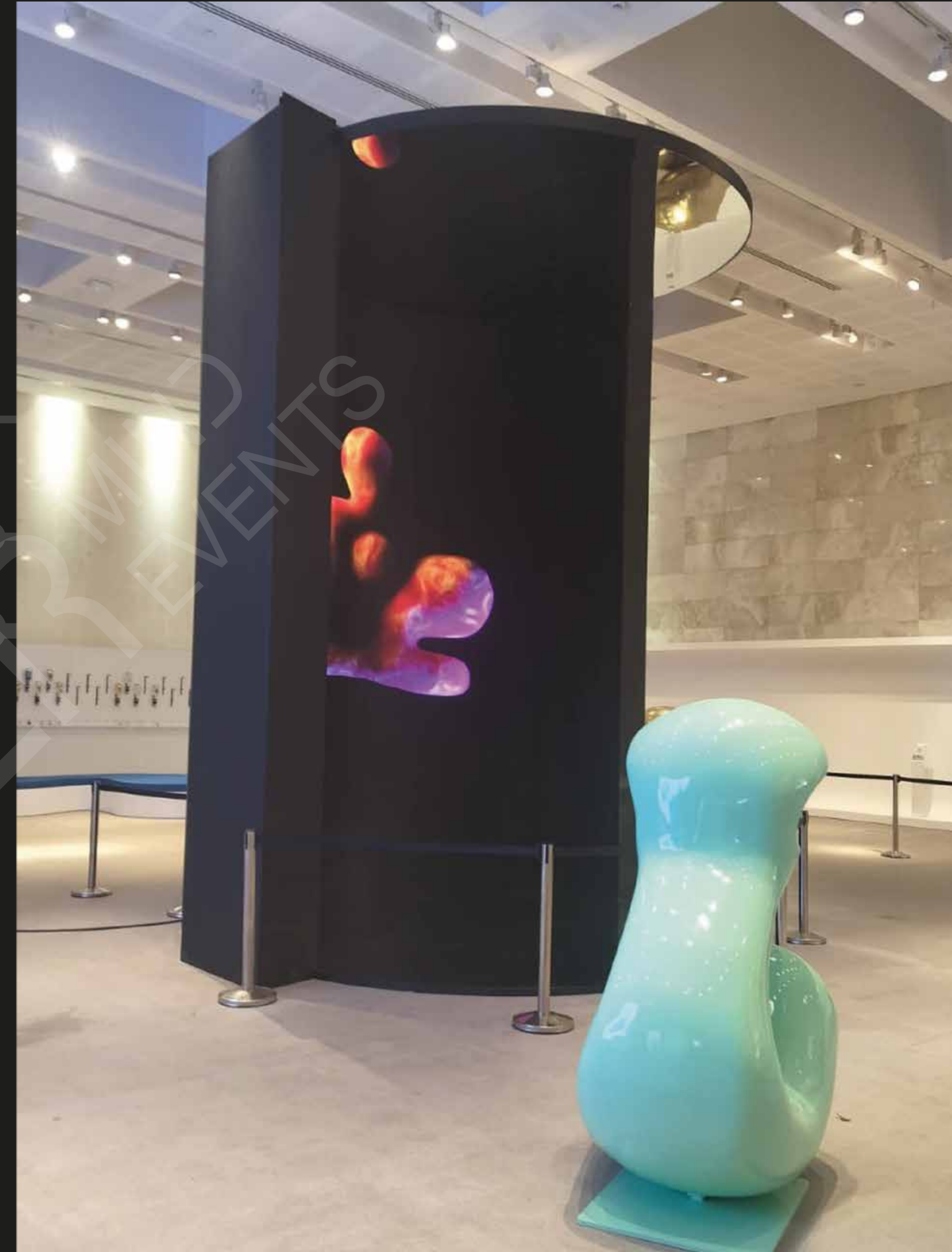
Curved-Shape Immersive 3D Content

Immerse your audience in a new dimension with our Curved-Shape Immersive 3D Content. Designed to fit seamlessly into curved display surfaces, this technology provides a captivating and expansive visual experience. It enhances viewer engagement by delivering depth and realism.



Cylindrical Immersive Room

Featuring a 360-degree cylindrical projection surface, this setup surrounds users with stunning, high-resolution visuals, creating a fully immersive environment. .



Telescope Immersive room experience

Utilizing cutting-edge projection technology, this solution envelops the entire room in stunning, high-definition visuals that create a fully immersive atmosphere.



Immersive Rooms

Immersive Rooms are specialized environments designed to fully engage users through a combination of advanced technologies that create a multi-sensory, interactive experience. These rooms are equipped to transport users into virtual or augmented realities, making them ideal for a range of applications from education and training to entertainment and corporate events.



Immersive Room in the Product Journey

Storytelling : Utilizes immersive storytelling techniques to connect emotionally with the audience, making the product's narrative more compelling and relatable.

Enhanced Engagement : An immersive room captivates visitors by enveloping them in a 360-degree experience, making the product journey memorable and impactful.



Interactive Immersive 3D Content Cubic-Shaped

This innovative solution projects dynamic, high-definition visuals onto all six faces of a cube, creating a fully immersive and interactive experience.



SCREEN DISPLAYS

The image features a large, curved wall of screens, each displaying the 'NEW ERA' logo. The logo consists of a stylized 'NE' in red and blue, with the words 'NEW ERA' in white below it. The screens are arranged in a grid pattern, and the overall scene is set against a dark background with yellow circuit-like graphics. The text 'SCREEN DISPLAYS' is prominently displayed in the center in a bold, white, sans-serif font.

Interactive Screen Tunnel

At Bros Mastermind, we specialize in designing interactive screen tunnels that elevate events and exhibitions. Our state-of-the-art technology creates immersive experiences, captivating audiences as they journey through dynamic, interactive displays.



Interactive Screens

Interactive Screens are advanced display technologies designed to facilitate user interaction through touch, gesture, or other input methods. These screens integrate advanced sensing and display technologies to offer a dynamic and engaging user experience across various applications.



Immersive Curved 3D content screens

Immersive Curved 3D Content Screens are advanced display technologies designed to provide an enveloping and realistic 3D visual experience. By combining curved screen designs with 3D content projection, these screens create an immersive environment that enhances viewer engagement and visual impact.



Curved Large Scale Screen

A Curved Large Scale Screen is a display technology featuring a wide, concave surface that enhances the viewing experience by wrapping the display around the viewer's field of vision. This design offers a more immersive and engaging visual experience.



Floor Screen with interactive content

Transform any space into a captivating experience with our Interactive Floor Screen. This state-of-the-art display turns your floor into a dynamic playground of engaging visuals and touch-responsive content, making it perfect for retail environments, exhibitions, and high-traffic venues..



Interactive 3D Fragmented Image Display

3D Fragmentation: Breaks down images into three-dimensional fragments, providing a layered and in-depth view that reveals hidden details and structures.



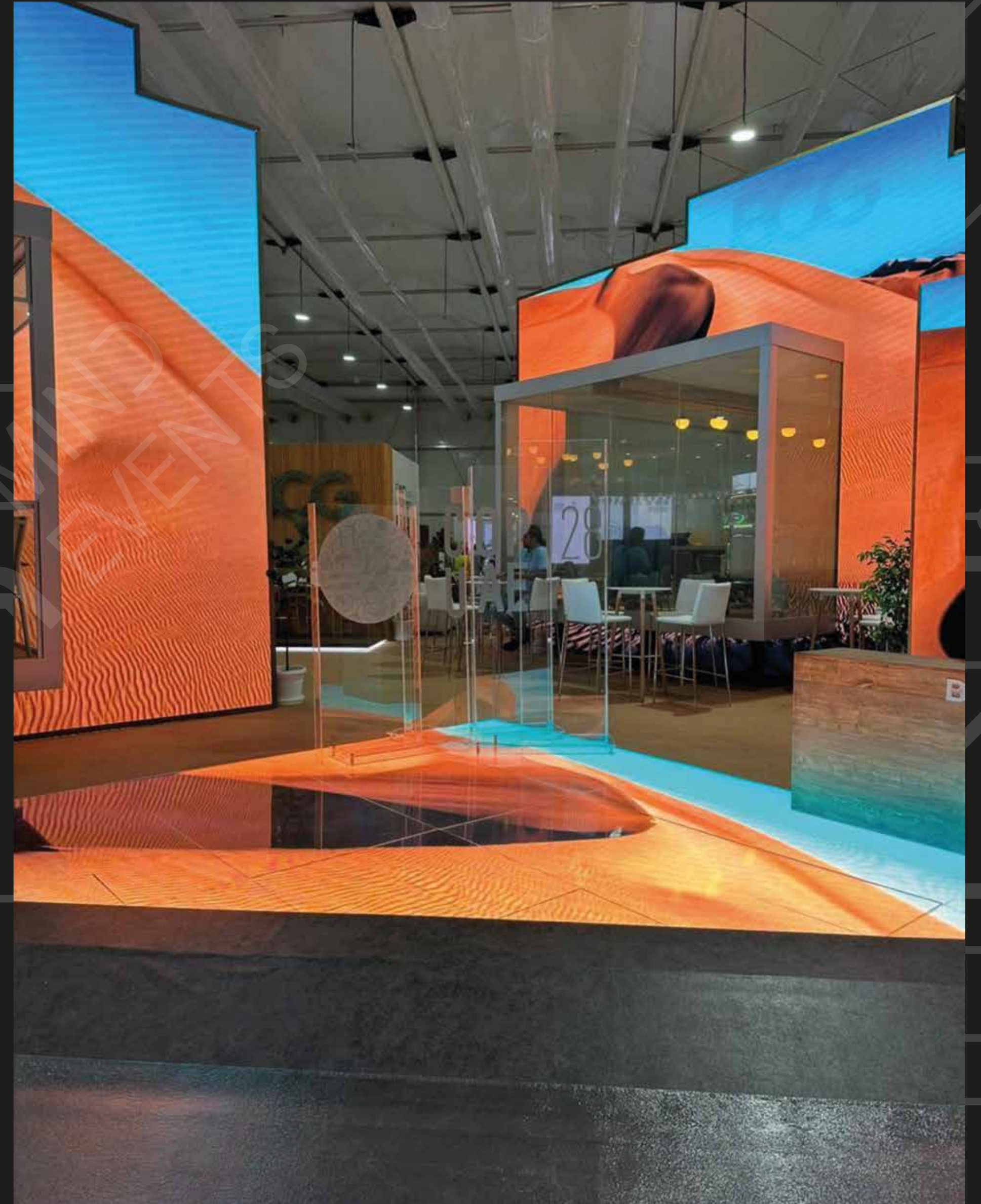
Interactive Screens

- **Touch Sensitivity:** Supports multi-touch functionality, enabling users to interact with content using fingers, styluses, or other touch tools. This feature allows for gestures such as swiping, pinching, and tapping.
- **High-Resolution Display:** Offers crisp, clear visuals with high resolution and vibrant colors, ensuring that content is displayed with sharpness and detail.



Content Integrations

Content Integrations refer to the process of incorporating various types of digital content and media into a unified platform or system to create a cohesive and interactive experience. This involves combining different content sources such as text, images, videos, interactive elements, and data. Into a seamless presentation or application.



Mechanical Sliding Screen with Mechanical Motion Scanner

The Mechanical Rotating Screen with Mechanical Motion Scanner is an innovative solution designed for efficient and precise monitoring of mechanical systems. This device integrates a high-quality rotating screen with an advanced motion scanner, providing real-time visualization and analysis of mechanical movements.

- Rotating Screen: Ensures a comprehensive 360-degree view, enhancing the ability to observe and diagnose mechanical operations from multiple angles.
- Motion Scanner: Equipped with state-of-the-art sensors to detect and track the slightest movements, ensuring accurate monitoring and data collection.





MECHANICAL INNOVATIONS

Motion Cylindrical with Lights and Mechanical Rotating Features

Elevate your display with our Motion Cylindrical System, featuring integrated lights and mechanical rotating elements. This cutting-edge solution combines dynamic lighting with a rotating cylindrical structure, creating a visually striking and interactive experience.



Rotating Mechanism

Designed for seamless integration into various setups, this feature adds dynamic movement to your presentation, captivating audiences with smooth and precise rotations.



Robotic Arm

The Robotic Arm is a versatile and highly precise mechanical device designed to automate and enhance various tasks across multiple industries. Equipped with advanced sensors, motors, and control systems, this robotic arm is capable of performing a wide range of functions with exceptional accuracy and efficiency.



Rotating Interactive Wheel of fortune game with interactive light

Rotating Mechanism: Features a large, physically rotating wheel that users can spin to generate random outcomes, similar to traditional wheel of fortune games.

Interactive Light Integration: Employs dynamic lighting effects that change in response to the wheel's movement, enhancing the visual appeal and adding an element of excitement to the game.



The background features a dark, dimly lit room where several people are gathered, possibly in a museum or gallery. They appear to be looking at a large projection on the wall. A prominent yellow graphic of a circuit board with various lines and nodes is overlaid on the right side of the image. The text 'INTERACTIVE PROJECTION MAPPING' is centered in a bold, white, sans-serif font.

INTERACTIVE PROJECTION MAPPING

Immersive Interactive Projection

Immersive Interactive Projection transforms spaces with dynamic, responsive visuals:

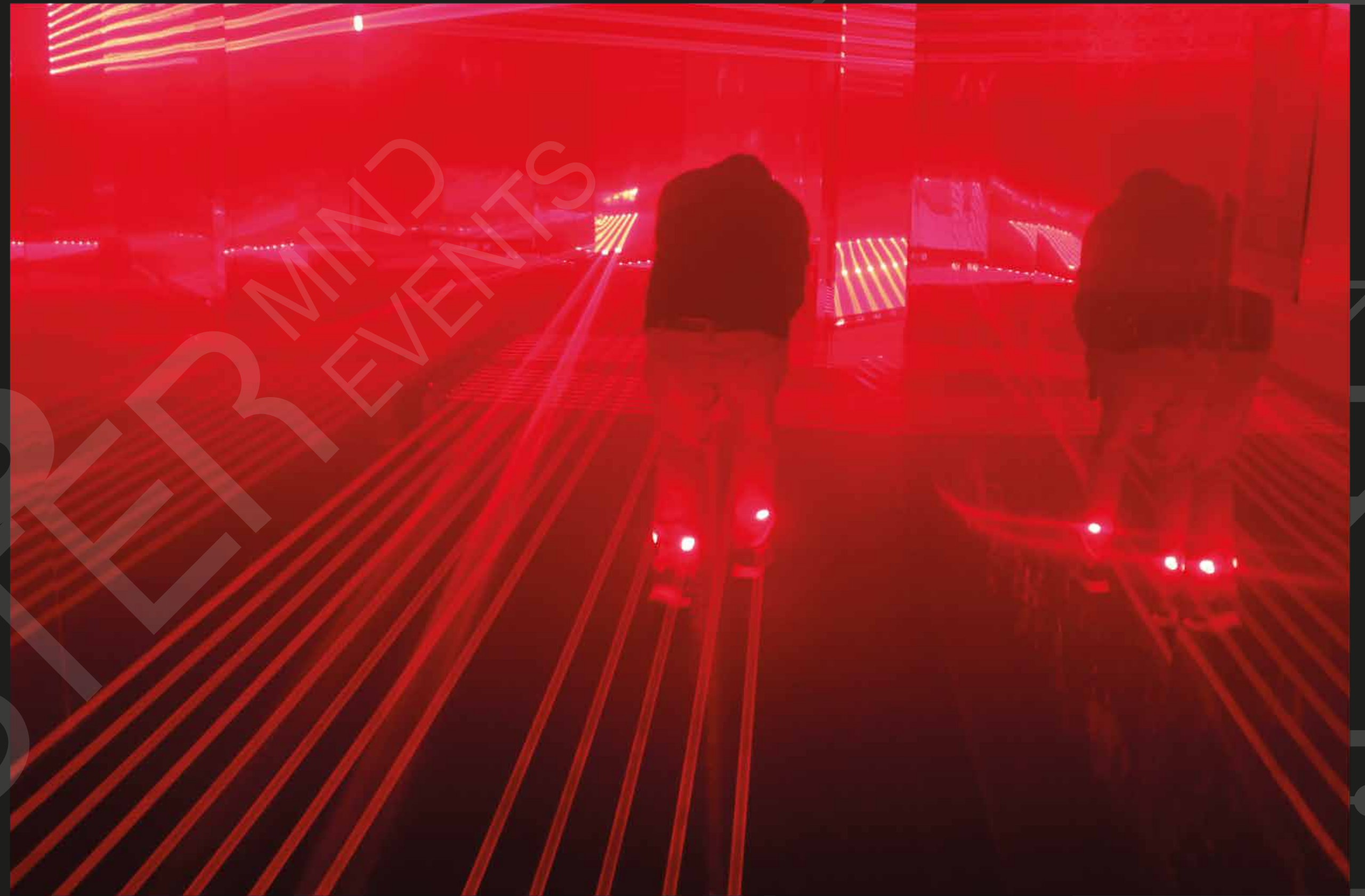
- Real-Time Interaction: Content responds to user movements and gestures.
- Customizable: Tailored projections for specific themes and events.
- Enhanced Engagement: Creates captivating and interactive experiences.



Immersive laser projection

Interactive Laser Projection combines laser technology with interactive elements to create engaging visual experiences.

- Laser Precision: Uses lasers to project high-quality, sharp images with vibrant colors.
- Interactive Elements: Allows users to interact with the projection through touch, motion, or other inputs.



Interactive Floor Projection

Interactive Floor Projection is a dynamic display technology that projects images and videos onto the floor, creating an engaging and interactive visual experience. This system combines advanced projection technology with motion sensors and interactive software to allow users to interact with the projected content through their movements and actions.



SAVE THE OCEAN

SAVE THE OCEAN (Clean, Save and Slide) - A large tunnel structure with a motion projection floor raising awareness about ocean pollution. Children participated in activities to "save" the ocean and then slid into a pool of plastic balls, engaging their tactile senses.



Cinema Projection Mapping

Our state-of-the-art cinema projection mapping theatre rooms offer an unparalleled cinematic experience. Each room is meticulously designed with advanced sound isolation technology to ensure an immersive audio experience free from external noise. Equipped with cutting-edge 4K projection systems, our theatres provide crystal-clear, vibrant visuals, bringing every scene to life with stunning detail.

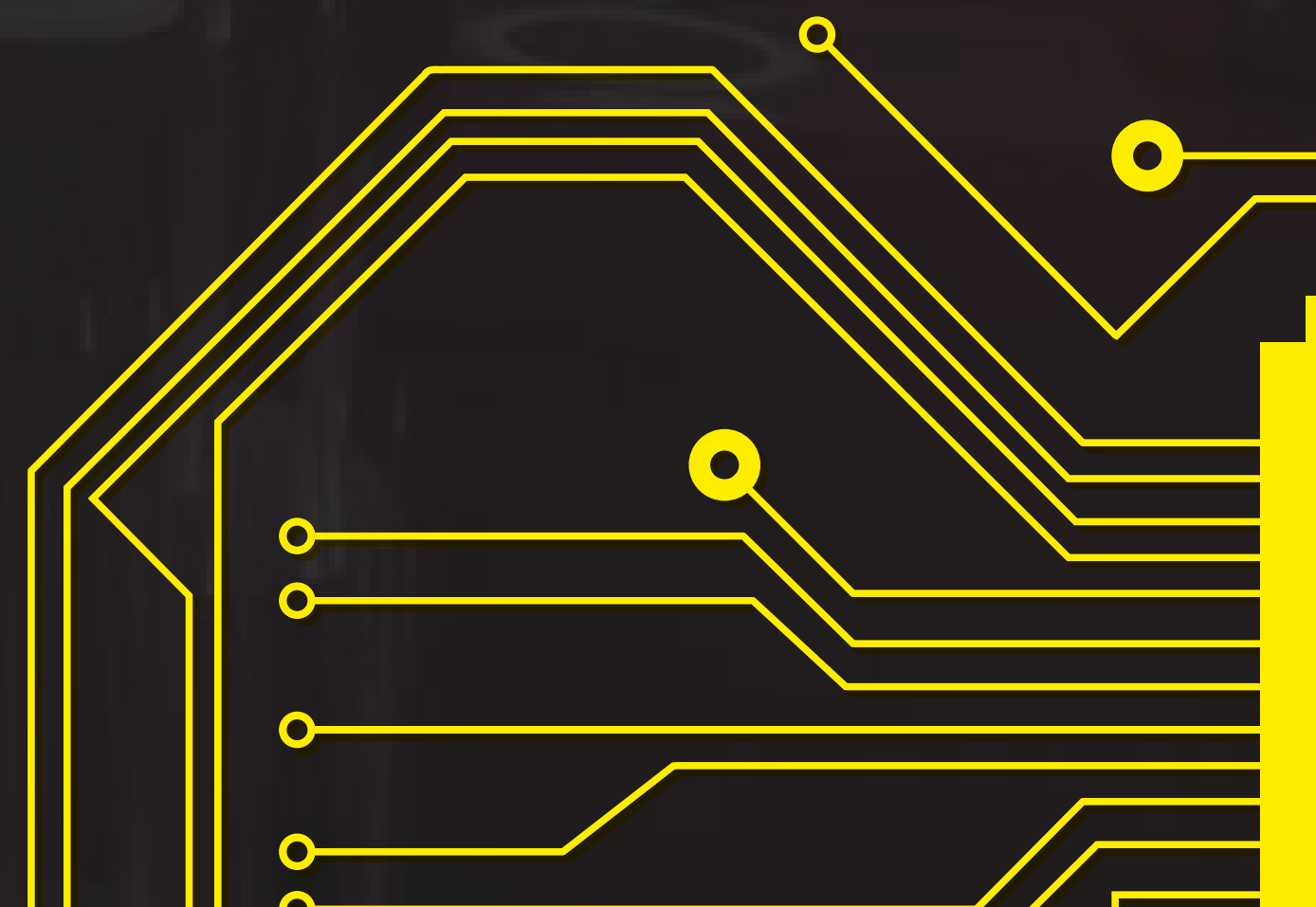


Reverse Projection Technology

This Technology creates a sharp and vivid display that is highly versatile and suitable for various applications, offering unique advantages over traditional front-projection systems.



LIGHT INNOVATIONS



Fiber Light Technology

Fiber Light Technology represents a breakthrough in illumination systems, utilizing advanced fiber optics to deliver precise and efficient lighting solutions. This technology is designed to provide high-quality, flexible, and energy-efficient lighting for a wide range of applications, from industrial use to artistic installations.



Smart Film

Smart Film is an advanced glazing technology that allows glass surfaces to change their opacity on demand, providing dynamic control over privacy and light transmission. By using electrical signals, smart film can transition from transparent to opaque, making it an ideal solution for applications where privacy or light control is needed.



Content and Light Integration

Content and Light Integration refers to the combination of visual content with dynamic lighting elements to create enhanced, interactive, and immersive experiences. This approach utilizes lighting to complement, highlight, or interact with digital content, enhancing the overall impact and engagement of the presentation.



Interactive Light Sensors

Interactive Light Sensors are devices that detect and respond to changes in light levels or patterns, enabling dynamic and responsive interactions in various applications.

- Light Detection: Sensors detect changes in light intensity or patterns.
- Real-Time Response: Adjusts or triggers actions based on light variations.



Contact Info

📍 **United Arab Emirates**

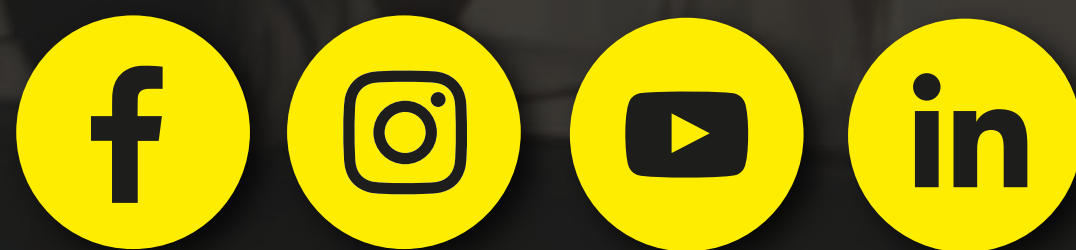
+971 4 323 6384 | +971 55 606 2621

info@brosmastermind.com

📍 **Saudi Arabia**

+966 55 903 3183 | +971 56 206 2600

infoksa@brosmastermind.com



FOLLOW US
On Social Media